

520 Blower Package

- Premium pressure style blower package
- Equipped with intake filter, intake silencer and discharge silencer
- Available with line sizes ranging from 2" to 8"
- Chamber designed silencers for maximum noise reduction

Application

The Schenck Process 520 Series of pressure style blower packages are configured around the size and performance of the blower to optimize operation. There are 6 models in the series with line sizes ranging from 2" to 8". The silencers are premium grade chamber designed for maximum noise reduction. A wide variety of blowers manufactured by Roots, Sutorbilt and Duroflow are available with this package.

The 520 package with horizontal tabletop style base is generally available on units up through 125 HP. Larger units may require a skid style base arrangement. Consult the factory for more information.

Specifications

- Positive displacement blower
- Tabletop base (painted) sanitary design
- Adjustable motor base
- V-belt drive
- OSHA standard drive guard
- Relief valve

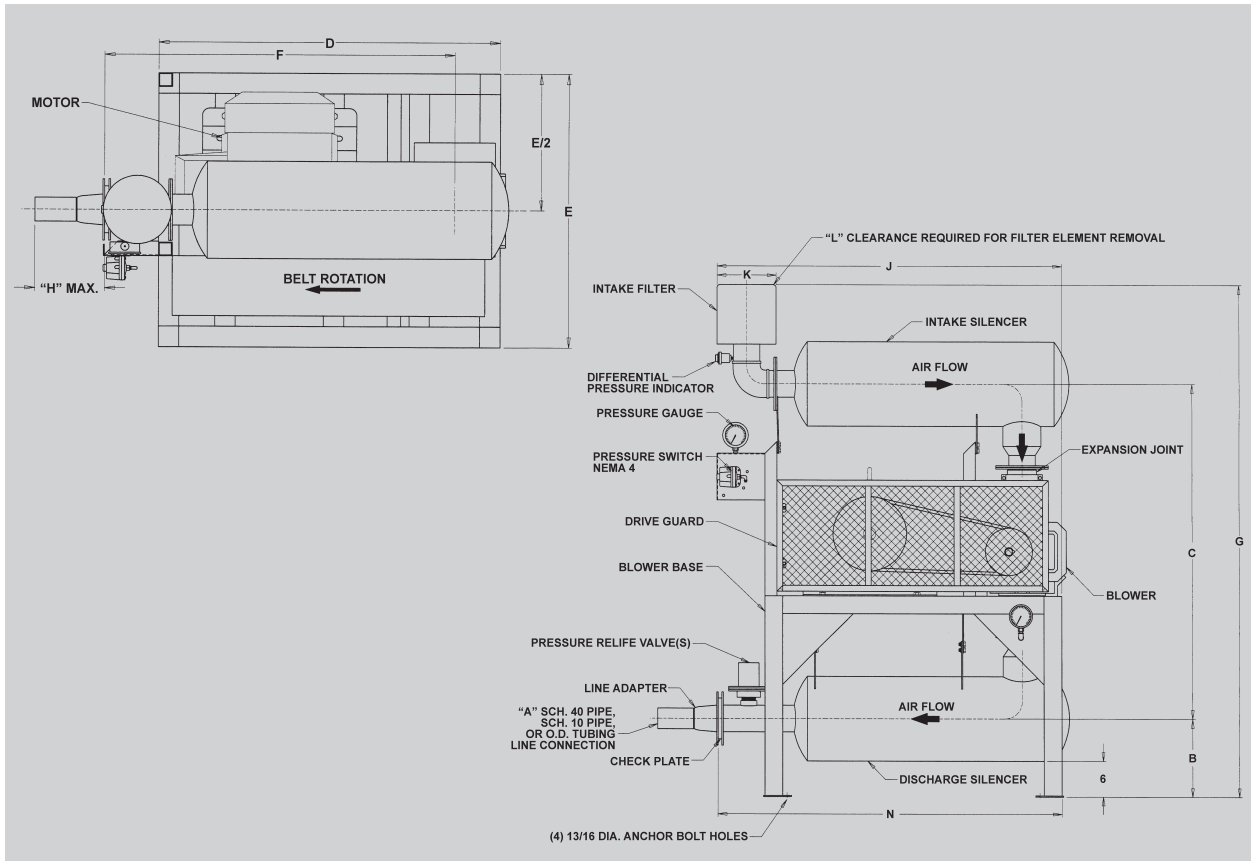


- Check valve
- Inter-connecting hardware
- Discharge silencer (absorptive type)
- Inlet filter and inlet silencer
- Pressure gauge
- All blower volumes are based on standard inlet conditions (14.7 PSIA, 70° F)
- Schenck Process white paint standard

Options

- Pressure switch (NEMA 4, NEMA 7/9 and dual settings available)
- Temperature gauge
- Temperature switch
- Galvanized base
- Expansion joints
- Tachometer
- Acoustically treated guard and silencers
- Vibration isolators
- If noise levels must be guaranteed at less than 90 dBa, a sound enclosure or acoustic treated components will be necessary. Consult factory for more information.

Dimensions



Model	Dimensions (inches)													Weight (lbs.)
	A	B	C	D	E	F	G	H	J	K	L	N		
522	2	10-1/8	39	40	30	29-13/16	62-7/8	10-1/8	35-1/2	10	11	34-13/16	1075	
523	3	11-1/8	62-1/4	45-1/2	33-1/2	47-11/16	88-7/16	10-1/8	59-9/16	10	11	58-1/8	2050	
524	4	13-1/8	57-3/4	50-1/2	33-1/2	51-11/16	87-9/16	10-1/8	60-9/16	10	11	60-7/16	2275	
525	5	14-1/8	65-3/8	50-1/2	40	62-13/16	96-3/4	11-1/8	74-3/8	16	11	70-13/16	2900	
526	6	15-1/8	71-13/16	55	40	72-3/4	105-3/4	11-5/8	85-13/16	16	17	85-1/2	3650	
528	8	17-3/16	82	70	45	93-5/16	134-7/16	12-1/8	118	22-1/2	18	105-1/4	4300	

NOTE: Dimensional information is specific to motor and blower combination selected. For actual dimensions, refer to Schenck Process drawing DO1918.

Schenck Process

7901 NW 107th Terrace
 Kansas City, MO 64153
 816-891-9300 or Fax: 816-891-8336
sales-fcp@schenckprocess.com
www.schenckprocess.com/us



All information is given without obligation. All specifications are subject to change. © by Schenck Process, 2018